



PCM for 25.6V LiFePO4 Battery Pack

SPECIFICATIONS

No.	Test Item	Criterion	
1	Voltage	Charging voltage	DC: 28.8V 3.6V/Cell
		Balance voltage for single cell	3.4V ± 0.03V
2	Current	Balance current for single cell	50mA
		Current consumption (power mode)	2000µA
		Current consumption (sleep mode)	300µA
		Maximal continuous charging current	40A
		Maximal continuous discharging current	40A
3	Over Charge Protection	Over charge detection voltage	3.7V ± 0.05V / cell
		Over charge detection delay time	2000 mS
		Over charge release voltage	3.4V ± 0.05V / cell
4	Over Discharge Protection	Over discharge detection voltage	2.2V ± 0.05V / cell
		Over discharge detection delay time	2000 mS
		Over discharge release voltage	2.5V ± 0.05V / cell
5	Over Current Protection	Over current detection current	40A ± 2A
		Detection delay time	70 S
		Release condition	10 S
6	Short Protection	Detection current	133A ± 2A
		Detection delay time	70 µS
		Release condition	60 S
7	Protection IC	BQ76930 + BQ78350	
8	Temperature	Charge Over-Temperature Detection	60°C
		Charge Over-Temperature Release	45°C
		Charge Under-Temperature Detection	-10°C
		Charge Under-Temperature Release	0°C
		Discharge Over-Temperature Detection	60°C
		Discharge Over-Temperature Release	50°C
9	Dimensions	134mm (L) x 66mm (W) x 20mm (T)	





ENEPOWER

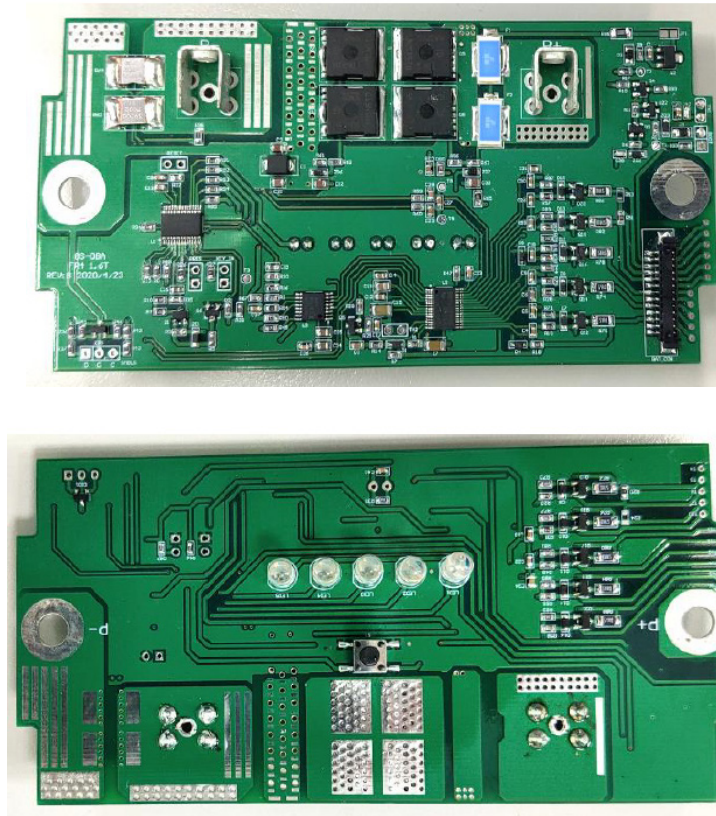
MIPCM-8S40A-LFP-01

Protection Circuit Module (PCM)

LiFePO₄

PCM for 25.6V LiFePO₄ Battery Pack

IMAGE



CONNECTION DIAGRAM

