

# PV-ezRack PostMount 1/2/3-A for XL Panels

Robust pole mount system with adjustable angle from one to three panels



# PV-ezRack PostMount 1/2/3-A for XL Panels

Clenergy's PV-ezRack PostMount 1/2/3-A for XL Panels delivers flexible and durable designs to mount from one to three panels, up to 2100X1100mm per post. It's ideal for remote off-grid applications such as water pumps or small residential and commercial systems. The panel tilt is easily adjustable between 0° and 60° throughout the year and comes with hassle-free mounting thanks to patented components such as the PV-ezRack rails and clamps. The combination of high quality aluminium, stainless steel and galvanised steel components make this a robust, reliable system with excellent corrosion resistance.

## Main Benefits

### Suitable for every soil condition

With its concrete foundation, PostMount-A can be installed on even or uneven ground or on a slope, making it suitable for any soil type and a wide range of applications.

### Adjustable tilt angle

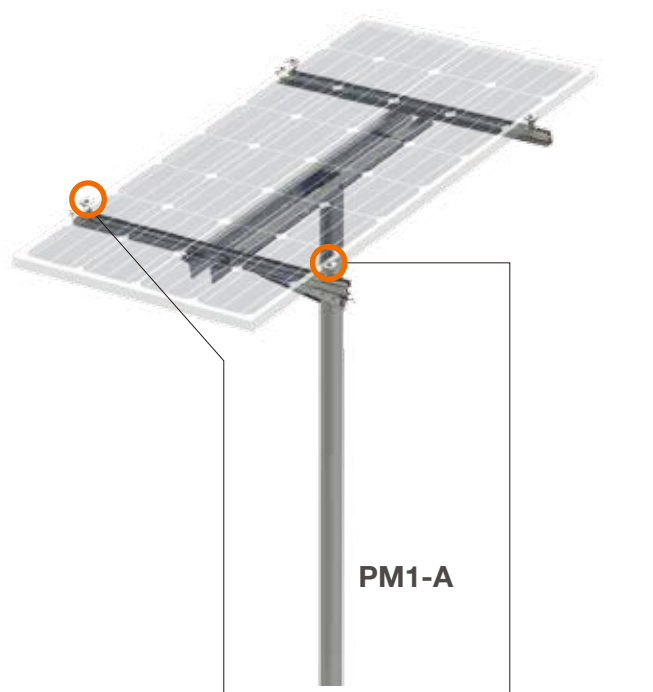
The steel cap (post head) is designed to tilt panels between 10° and 60° to ensure that you get the required power output you need anywhere, anytime. Changing the angle merely requires a single pair of spanners.

### Robust and reliable

Mounted on aluminium rails the panels are supported by robust galvanised steel landscape and master tubes secured with stainless steel bolts. The post is fixed in to a concrete foundation.

### Quick and easy installation

Innovative and internationally patented, the Z-Module technology is used in almost all PV-ezRack components. The Z-Module provides a quick, easy and safe installation method and can be inserted in to the rail at any given point, secured with just three hand grips.



C-U/30/46-G

### Universal Clamp

Our patented universal clamp, with dual functionality (inter and end clamp) and large range of height adjustability from 30mm up to 46mm, can be compatible with most common framed PV modules.

10 Year  
Warranty\*

Commercial

Residential

International Patent  
PCT/AU2009/000616

\*see Clenergy PV-ezRack warranty for further details

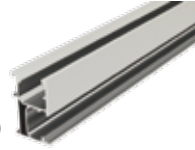
ER-RT



### Master Tube

The master tube connects to the adjustable tube and steel cap. It is a robust galvanised steel profile and holds the angle brackets or the landscape tubes with U-bolts.

ER-R-ECO



### ECO Rail

Specifically developed to achieve larger spans, the design of the aluminium ECO-rail enables faster installation. The ECO-rails have two patented Z-Module channels with one at top for panel mounting and the second on side which connects to the PostMount-A structure.



PM2-A



PM3-A

ER-P



### Post

This is a steel post with the wall thickness 6mm, which is embedded in to concrete. It is also available with welded mounting plate(flange).

ER-SC



### Steel cap

The steel cap sits on top of the post and connects the adjustable tube to the master tube allowing easy adjustment between the different tilt angles.

### Available accessories

Grounding/earthing



Cable clip

Rail caps

### Materials

AL6005-T5 | SUS304 | Q235

Contact us or one of our qualified resellers for a personalised quotation today.



**Clenergy Australia**

1/10 Duerdin Street, Clayton VIC 3168 Australia  
 Tel: +61 3 9239 8088 Fax: +61 3 9239 8024  
 E-mail: sales@clenergy.com.au www.clenergy.com.au

**Clenergy China**

999-1009 Min'an Rd, Huoju Hi-tech Ind. Dev. Zone  
 Xiang'an District 361101, Xiamen, Fujian, China  
 Tel: +86 592 311 0088 Fax: +86 592 599 5028  
 E-mail: sales@clenergy.com.cn www.clenergy.com.cn

**Clenergy EMEA**

Esplanade 41, 20354 Hamburg, Germany  
 Tel: +49 (0) 40 3562 389 00  
 E-mail: sales.emea@clenergy.com

**Clenergy Japan**

Nittochi Yamashita Building 5th Floor  
 23 Yamashita-cho, Yokohama, 231-0023 Japan  
 Tel: +81 45 228 8226 Fax: +81 45 228 8316  
 E-mail: sales@clenergy.co.jp www.clenergy.jp

**Clenergy Philippines**

145 Yakal St., San Antonio village, Makati City, Philippines  
 Tel: +63 977 8407240  
 E-mail: sales\_ph@clenergy.com www.clenergy.ph

**Clenergy Thailand**

9/2, 5th Floor, Vorasin Building, Soi Yasooob 2, Viphavadee-Rungsit  
 Road, Chomphon Sub-district, Chatuchak District, Bangkok 10900  
 Tel: +66 (0) 2 277 5201, +66 (0) 6 3228-0200  
 E-mail: sales\_th@clenergy.com,support\_th@clenergy.com

**Clenergy Singapore**

24 Raffles Place #28-01 Clifford Centre Singapore 048621  
 Tel: +65 9743 1425  
 E-mail: vincent.chan@clenergy.com

**Clenergy Vietnam**

Tel: +86 592 3110095  
 E-mail: sales\_vietnam@clenergy.com;  
 susie.chen@clenergy.com;  
 ducnguyen@clenergy.com

**Worldwide Network**

