

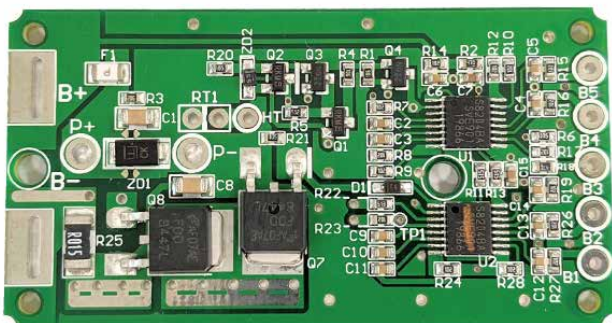


PCM for 21.6/22.2V Lilon Battery Pack

SPECIFICATIONS

| No. | Test Item | Criterion | |
|-----|---------------------------|---|----------------|
| 1 | Voltage | Charging voltage | DC:25.2V CC/CV |
| | | Balance voltage for single cell | N/A |
| 2 | Current | Balance current for single cell | N/A |
| | | Low Current consumption for single cell | ≤40μA |
| | | Maximal continuous Discharging current | 6.3A |
| 3 | Over Charge Protection | Over charge detection voltage | 4.25V±0.025V |
| | | Over charge detection delay time | 1000mS |
| | | Over charge release voltage | 4.150V±0.050V |
| 4 | Over Discharge Protection | Over discharge detection voltage | 2.80V±0.08V |
| | | Over discharge detection delay time | 100ms |
| | | Over discharge release voltage | 3.0±0.10V |
| 5 | Over Current Protection | Over current detection voltage | 0.15V |
| | | Over current detection current | 10±1A |
| | | Detection delay time | 20ms |
| | | Release condition | Open loop |
| 6 | Short Protection | Detection condition | <66.66A |
| | | Detection delay time | 300us |
| | | Release condition | Open loop |
| 7 | Resistance | Protection circuitry | ≤20mΩ |
| 8 | Temperature | Operating Temperature Range | -20~+70°C |
| | | Storage Temperature Range | -20~+85°C |
| 9 | Dimensions | L 60.0mm x W 32.0mm x T 5.0mm | |

LAYOUT DIAGRAM



CONNECTION DIAGRAM

