

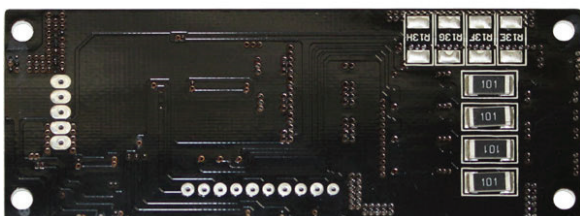
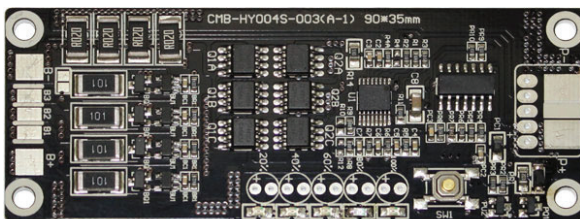


## PCM for 13.2V LiFePO4 Battery Pack

### SPECIFICATIONS

No.	Test Item	Criterion	
1	Voltage	Charging voltage	DC:14.4 CC/CV
		Balance voltage for single cell	3.60V±0.05V
2	Current	Balance current for single cell	72±10mA
		Low Current consumption for single cell	Max50µA
		Maximal continuous Discharging current	10A
		Maximal continuous Charging current	10A
3	Over Charge Protection	Over charge detection voltage	3.90±0.05V
		Over charge detection delay time	0.5S—2S
		Over charge release voltage	3.80±0.1V
4	Over Discharge Protection	Over discharge detection voltage	2.00±0.1V
		Over discharge detection delay time	50ms - 1500ms
		Over discharge release voltage	2.50±0.1V
5	Over Current Protection	Over current detection voltage	N/A
		Over current detection current	30±5A
		Detection delay time	5ms - 60ms
		Release condition	Cut load
6	Short Protection	Detection condition	Exterior short circuit
		Detection delay time	200-800µs
		Release condition	Cut load
7	Resistance	Protection circuitry	≤50mΩ
8	Temperature	Operating Temperature Range	-40~+85°C
		Storage Temperature Range	-40~+125°C
9	Dimensions	L 90.0mm x W 35.0mm x T 3.0mm	

### IMAGE



### CONNECTION DIAGRAM

