



PCM for 14.4/14.8V Lilon Battery Pack

SPECIFICATIONS

No. Test Item *Test at normal temperature 25±2°C and relative humidity ≤90%.

Criterion

No.	Test Item	Criterion			
1	Voltage	Charging voltage DC: 16.8V CC/CV (4.2V/1cell)			
2	Current	Current Consumption (Software)	<550µA		
		Current Consumption (Sleep Mode)	<124µA		
		Maximal Continuous Charging Current	6A		
		Maximal Continuous Discharging Current	20A		
3	Over Current Protection	OCC1 Threshold	6000mA	OCD1 Threshold	20000mA
		OCC1 Delay	2s	OCD1 Delay	10s
		OCC2 Threshold	7000mA	OCD2 Threshold	22000mA
		OCC2 Delay	2s	OCD2 Delay	2s
4	Over Charge Protection	POV Threshold	17.500V±0.05V	POV Recovery	16.000V±0.05V
		POV Delay	2s		
		COV Threshold	4.350V±0.05V	COV Recovery	3.900V±0.05V
		COV Delay	2s		
5	Over Discharge Protection	CUV Threshold	3.000V±0.05V	CUV Delay	2s
		CUV Recovery	3.250V±0.05V		
6	Over Temperature Protection	OTC Threshold	+70°C±3°C	UTC Threshold	-5°C±3°C
		OTC Delay	2s	UTC Recovery	0°C±3°C
		OTC Recovery	+55°C±3°C		
		OTD Threshold	+80°C±3°C	OTD Delay	2s
		OTD Recovery	+55°C±3°C	OTD Recovery	+55°C±3°C
7	Secondary Protection	Cell	4.75V±0.1V		
8	Short Protection	Detection Condition	P+, P- Short Circuit		
		Detection Delay Time	200-500µs		
		Release Condition	Cut Load		
9	Resistance	Protection Circuitry	≤100mΩ		
10	BMS IC		BQ20Z95		
11	Temperature	Operating Temperature Range	-30°C~+85°C		
		Storage Temperature Range	-40°C~+125°C		
12	Dimensions	L 80.0mm x W 70.0mm x T 1.6mm			





ENEPOWER

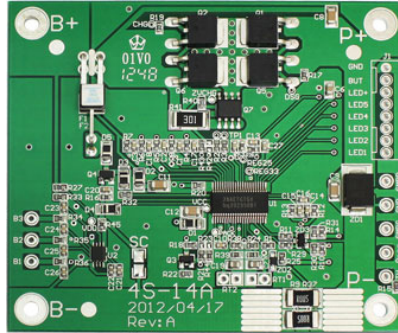
MIPCM-4SXP20ABMS

Protection Circuit Module (PCM)

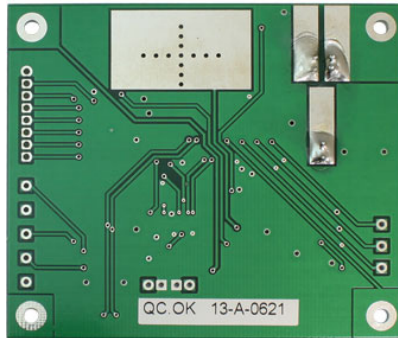
Lilon

PCM for 14.4/14.8V Lilon Battery Pack

IMAGE



10K NTC



CONNECTION DIAGRAM

