



## PCM for 14.4/14.8V Lilon Battery Pack

### SPECIFICATIONS

#### Characteristics

#### Specification

1	Electrical Characteristics	Charging Voltage	16.8±0.1V	Remark:	4.2V / 1Cell		
		Discharging Current / Charging Current	7A				
		Charging Method	CC / CV (Constant-current & -Voltage with Limited current)				
		Supply Voltage Range (B+, B-)	-0.3V to 34V				
		Impedance	≤100mΩ (B- to P- and B+ to P+)				
		Current Consumption	Firmware Running	<600μA			
			Sleep Mode	<200μA			
		Temperature	Operating	-40~+85°C			
Storage	-40~+125°C						

#### Criterion

**Test Item** \*Test at normal temperature 25±2°C and relative humidity ≤90%.

			Parameter	Delay Time	Release Condition	
2	Over Charge Protection	Single Cell	1st Level Safety	4.3V±0.025V	2.0s±0.5s	4.1±0.05V
			2nd Level Safety	4.4±0.025V	1.5s±0.5s	Permanent fail
	Pack	1st Level Safety	17.2±0.05V	2.0s±0.5s	16.4±0.1V	
		2nd Level Safety	17.6±0.05V	0	Permanent fail	
3	Over Discharge Protection	Single Cell	2.5±0.05V	2.0s±0.5s	3.0±0.1V	
		Pack	10V±0.05V	2.0s±0.5s	12±0.1V	
4	Over Current Protection	1st Level Safety	6500mA	2S±0.5s	200mA	
		2nd Level Safety	15000mA	1S±0.5s	200mA	
		SOC Protection	20000mA	0	Permanent fail	
5	Over Temperature Protection	Charge	1st Level Safety	55±5°C	2.0s±0.5s	50±5°C
			2nd Level Safety	65±5°C	0	Permanent fail
		Discharge	1st Level Safety	60±5°C	2.0s±0.5s	55±5°C
			2nd Level Safety	75±5°C	0	Permanent fail
6	Short Circuit Protection		20A	488s±100μs	20mA	
7	BMS IC			BQ20Z95		
8	Dimensions			L 60mm x W 36mm x T 3mm		





# ENEPOWER

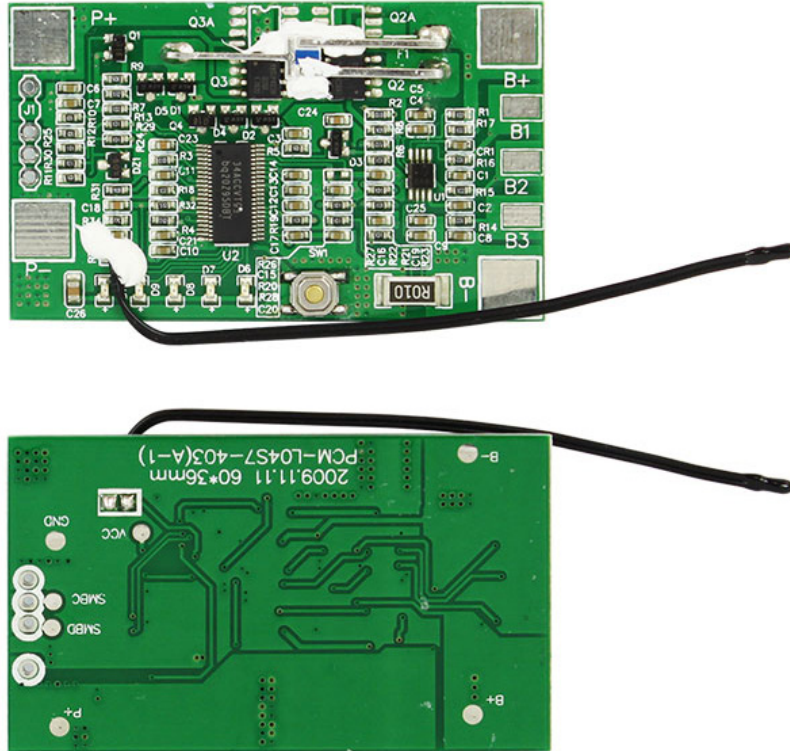
## MIPCM-4SXP7ABMS

Protection Circuit Module (PCM)

Lilon

### PCM for 14.4/14.8V Lilon Battery Pack

#### IMAGE



#### CONNECTION DIAGRAM

